



**UNIVERSITÉ  
DE LORRAINE**



FACULTÉ de MÉDECINE  
NANCY

IPA2

Séance 6 : Outils pour les illustrations, écrire le texte

[lucy.georges@univ-lorraine.fr](mailto:lucy.georges@univ-lorraine.fr)

# Typologie & Principes de base

- Tableaux
- Graphiques
  - Histogrammes
  - Courbes
  - Camemberts
  - Etc.
- Cartes
- Diagrammes
- Photographies
- Dessins
- Logos
- Code QR

Pertinence

Texte d'accompagnement

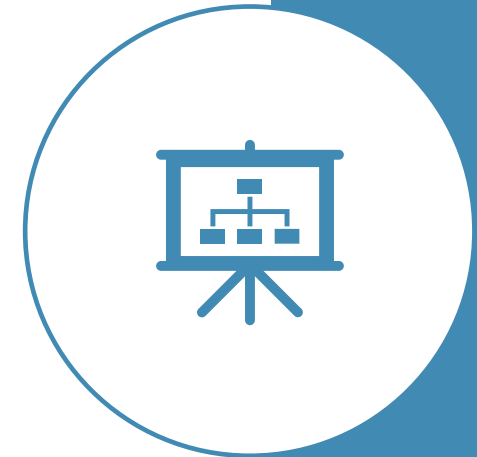
Couleurs cohérentes et compatibles

Respect de l'échelle

Pas de distractions

# 10 outils en ligne pour les graphiques

1. <https://venngage.com/features/graph-maker>
2. <https://developers.google.com/chart/>
3. <https://rawgraphs.io/>
4. <https://livegap.com/charts/index.php?lan=en>
5. <https://www.onlinecharttool.com/>
6. <https://www.canva.com/graphs/>
7. <https://venngage.com/features/graph-maker>
8. <https://www.visme.co/graph-maker/>
9. <https://www.chartgo.com/index.jsp>
10. <https://infogram.com>



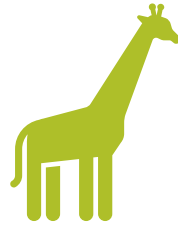
# Le texte

---



## Quantité

400-600 mots



## Taille

Titre

En-têtes

Corps



## Structure

# Le titre

---

- Concis
- Précis : Sujet et méthode
- Lisible à 2 mètres
- Accrocheur? Résultat ou question

**Titre**

Auteurs

**En-tête**

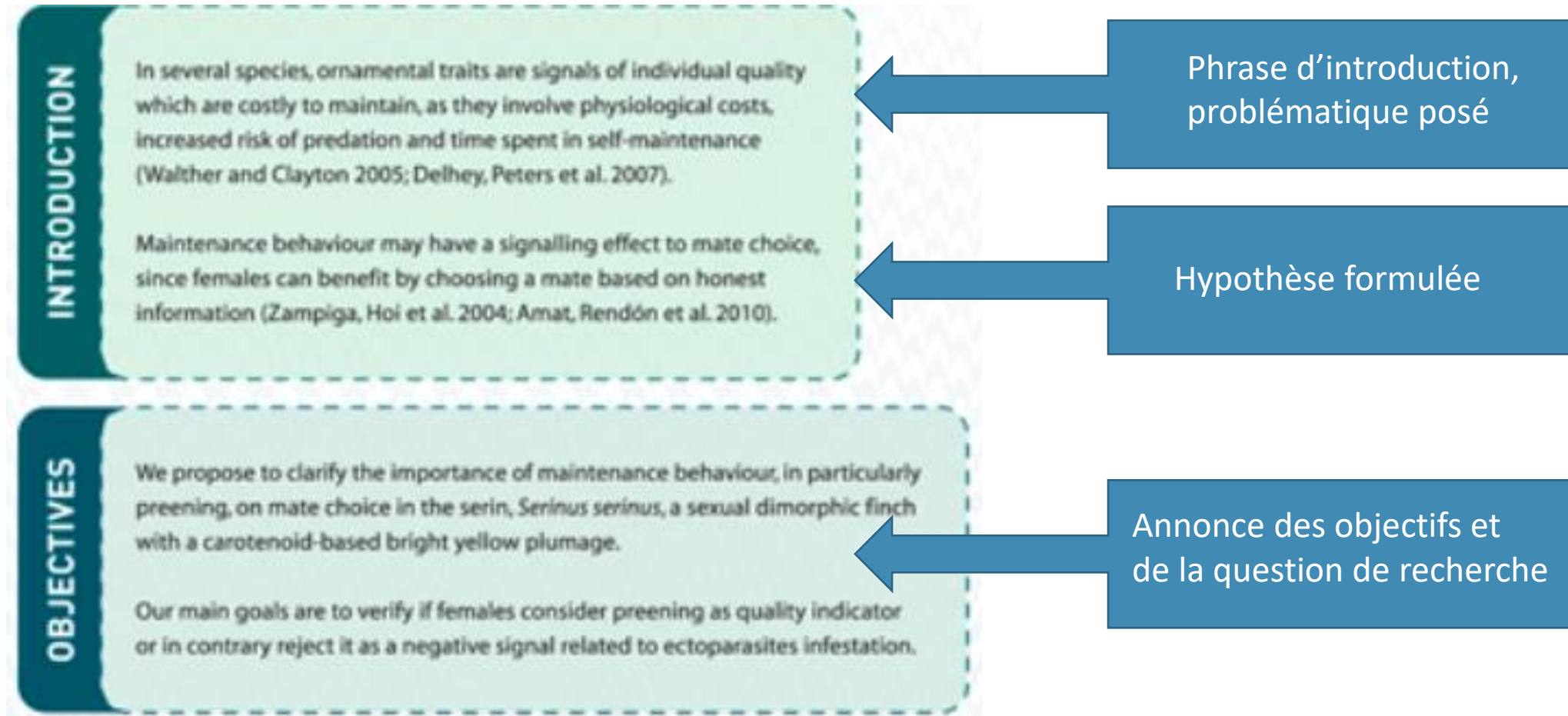
Corps du texte

**En-tête**

Corps du texte

# Introduction

Intitulés alternatifs : context, background, study rationale



# Méthodes

## Reprise des éléments du protocole

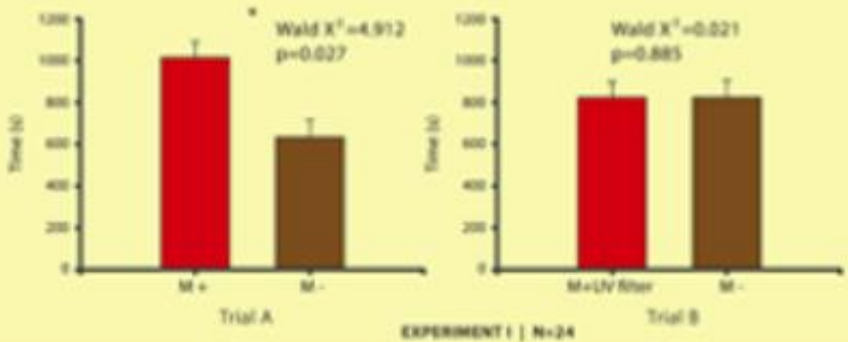
- Sources
- Mots clés
- Dates
- Critères d'inclusion et exclusion
- Analyse de qualité
- Eventuel traitement de données



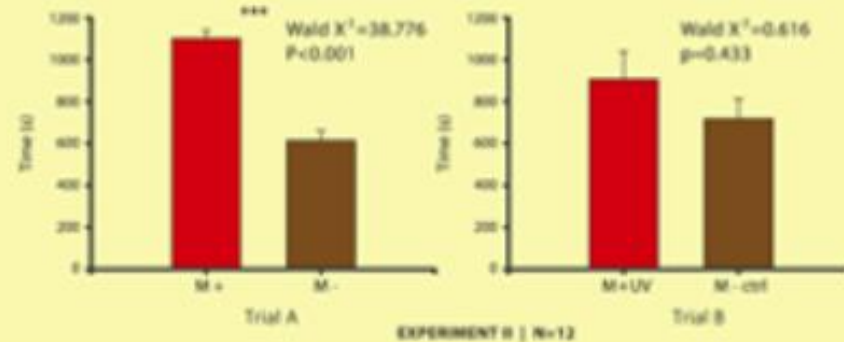
# Résultats

Place surtout aux illustrations

Females preferred more colourful males (A). When the UV-light of the preferred ones was blocked, females stop exhibiting preference (B).



Females preferred more colourful males (A). When the UV was blocked directly in M+ plumage, females didn't show any preference (B).



RESULTS



## Conclusion(s?)

## CONCLUSIONS

- Individuals showed repeatability in the four behavioural tests.
- Males and females differed in their consistency and behavioural responses across the different tests.
- Behavioural traits were correlated, indicative of a possible behavioural syndrome, but differed between females and males: More neophobic males were also more sociable, and females that were more sociable were less fearful and marginally less explorative.
- In mate choice tests, female personality was related with its own behavioural performance.
- Our results stress the importance of looking for sex differences in personality, and for considering the influence of personality in mate choice context.

# Références

Mentionnées  
dans le texte ?

Oui

Moins de trois ?

Inclure à la fin

Plus de trois ?

Non





# En pratique...

## Introduction

Énoncer le problème au sens large  
(1 à 2 phrases)

S'appuyer sur l'existant pour faire  
ressortir ce qui reste à savoir

Exprimer votre question de recherche ou  
hypothèse et l'objectif de l'étude

## Exemple

Women have had to campaign to be able to take part in endurance running events such as the marathon which was not allowed until 1972 for reasons usually related to largely false claims about the physical risks specific to women. Over forty years later some of these claims are still commonly heard, such as the risk of pelvic organ prolapse. No studies in the literature seem to support this claim, and most focus on running after a prolapse. We therefore sought to identify the risk factors which have been shown to be statistically significant in order to establish the real causes.

## Methods

A search was conducted in **DATABASE NAMES** for resources published between **YEAR1** and **YEAR2** in **LANGUAGES** and **OTHER CRITERIA**. The keywords '**KEYWORD1-N (list)**' were used in all relevant combinations, and inclusion criteria were **CRIT1...** This yielded a total of **X** records, from which we excluded **Y** because **REASON1** or **REASON2...** after evaluation.

## **Results**

Texte minimal. Place aux éléments visuels : Illustrations accompagnées d'explications

## **Conclusion**

Décrire les observations principales de vos lectures et mettre le doigt sur des problèmes qui demeurent le cas échéant. Evoquer d'éventuelles pistes de recherche.

# Calendrier

---



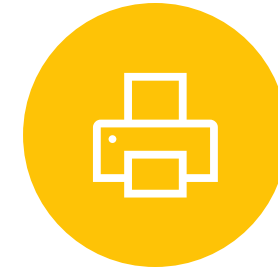
OCTOBRE ET NOVEMBRE  
: CONTACTEZ-MOI PAR  
MAIL AU BESOIN.



DÉBUT DECEMBRE :  
2 SÉANCES ATELIER; ÉCRIT  
ET MISE EN PAGE



AVANT 15 DECEMBRE :  
(FAIRE) IMPRIMER VOTRE  
POSTER



15 ET 17 DECEMBRE :  
PRESENTATIONS ; 10-12  
MINUTES + QUESTIONS